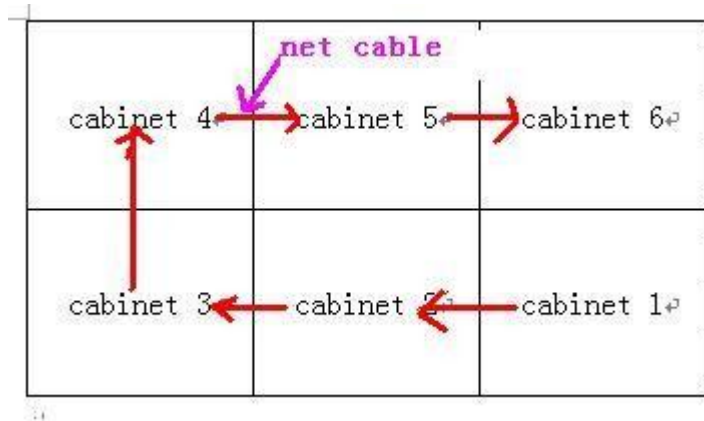


LINSN LedStudio Operation Steps

Preparation

1. Please connect the 6 cabinets with the net cable in this order:



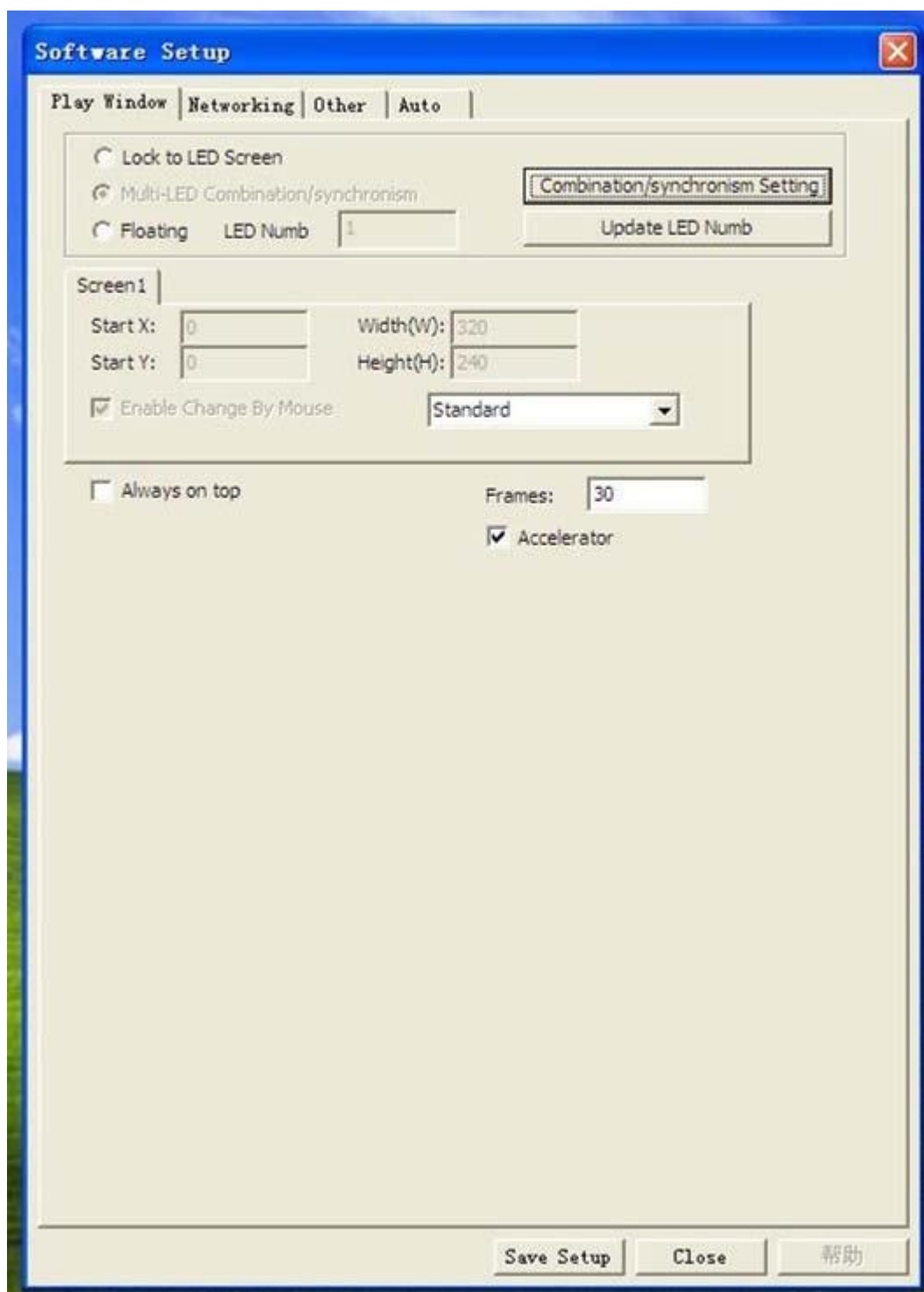
2. Please make sure the sending card and DVI card are properly installed.

Software setup

Step 1 Open the software.



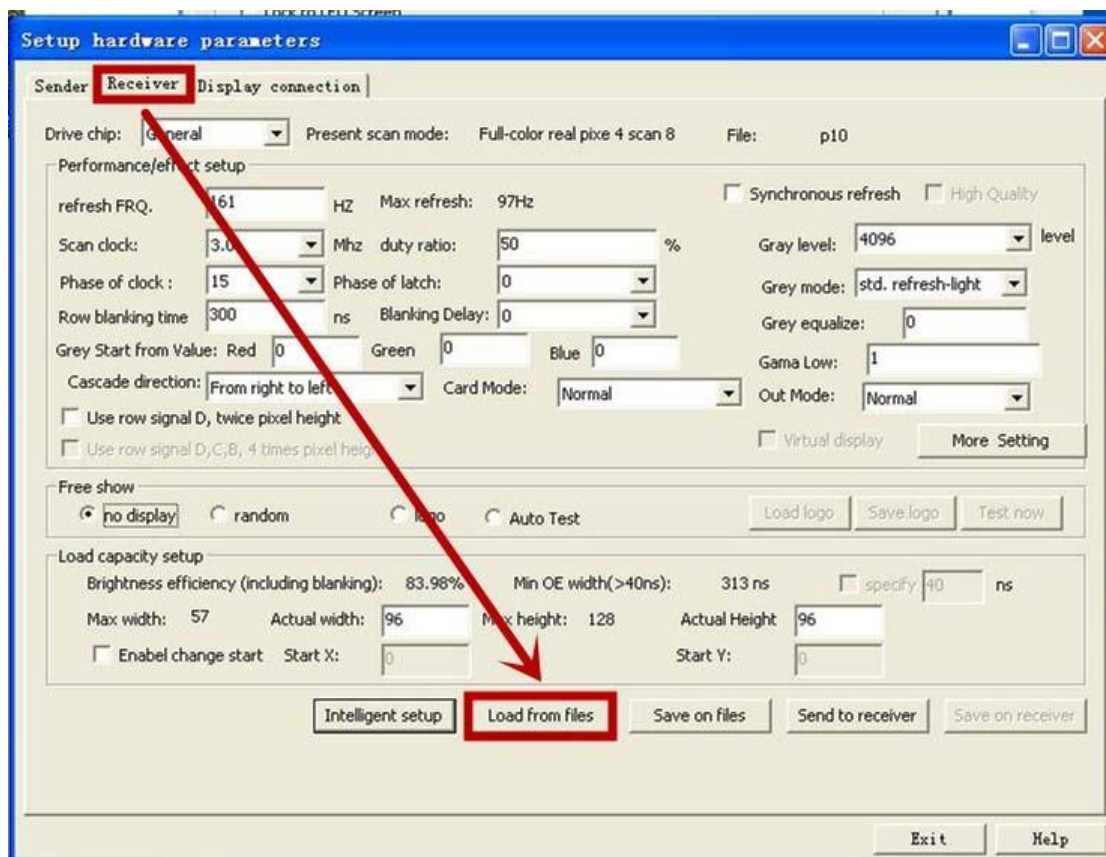
Options→Software Setup.



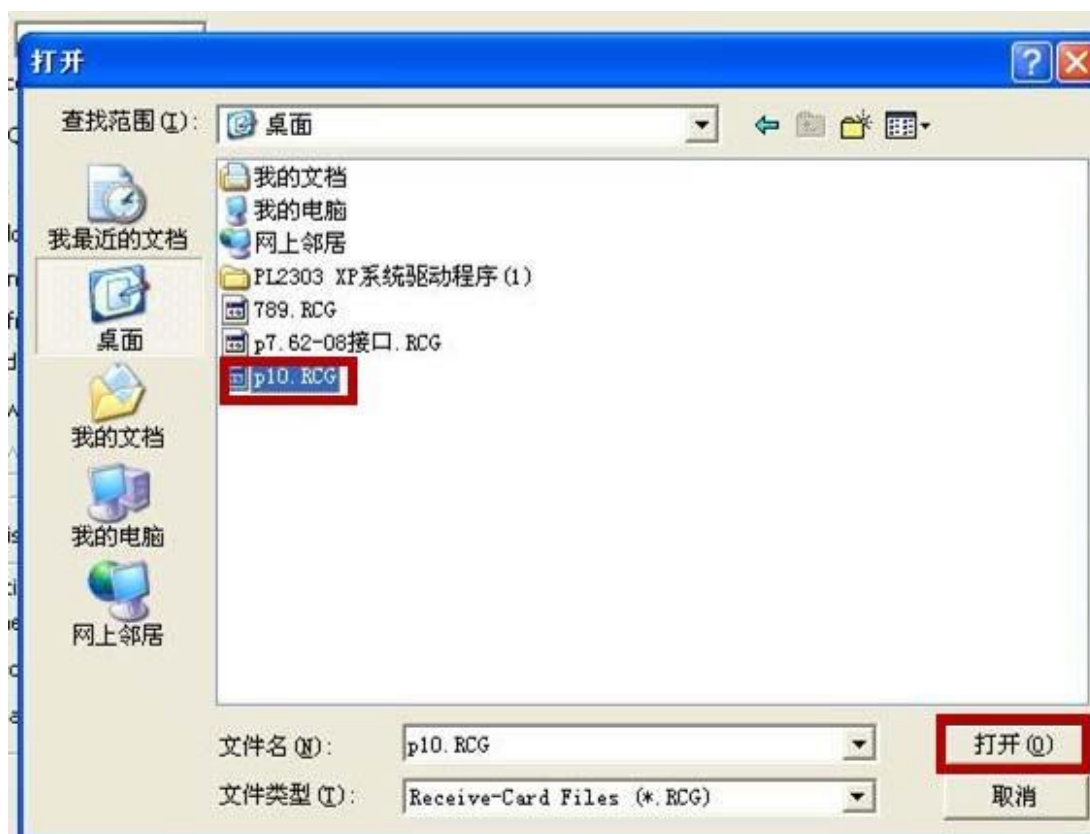
Step 2 When you see the above window, enter linsn on your keyboard. And you will see this window:



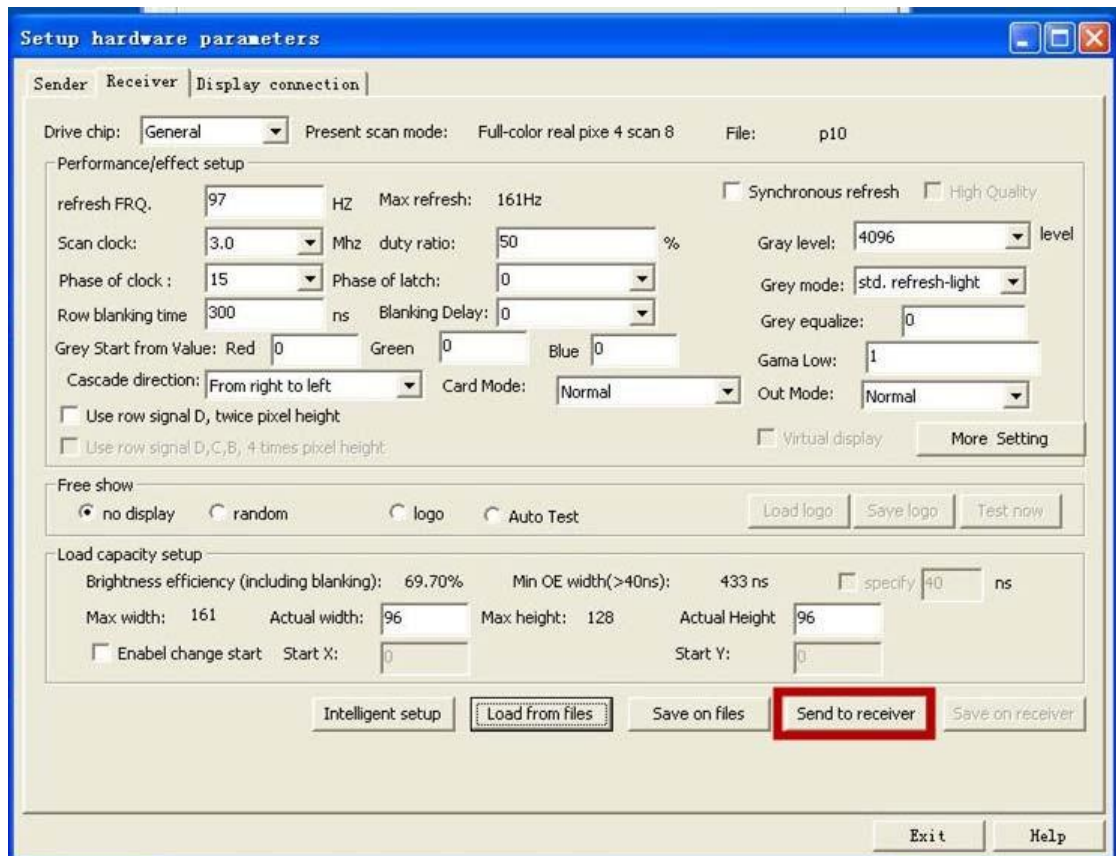
Enter 168 and the following window will pop up. Click Receiver and then click load from files.



Step 5 Select the p10.RCG file from the computer.



Step 6 Click Send to receiver.

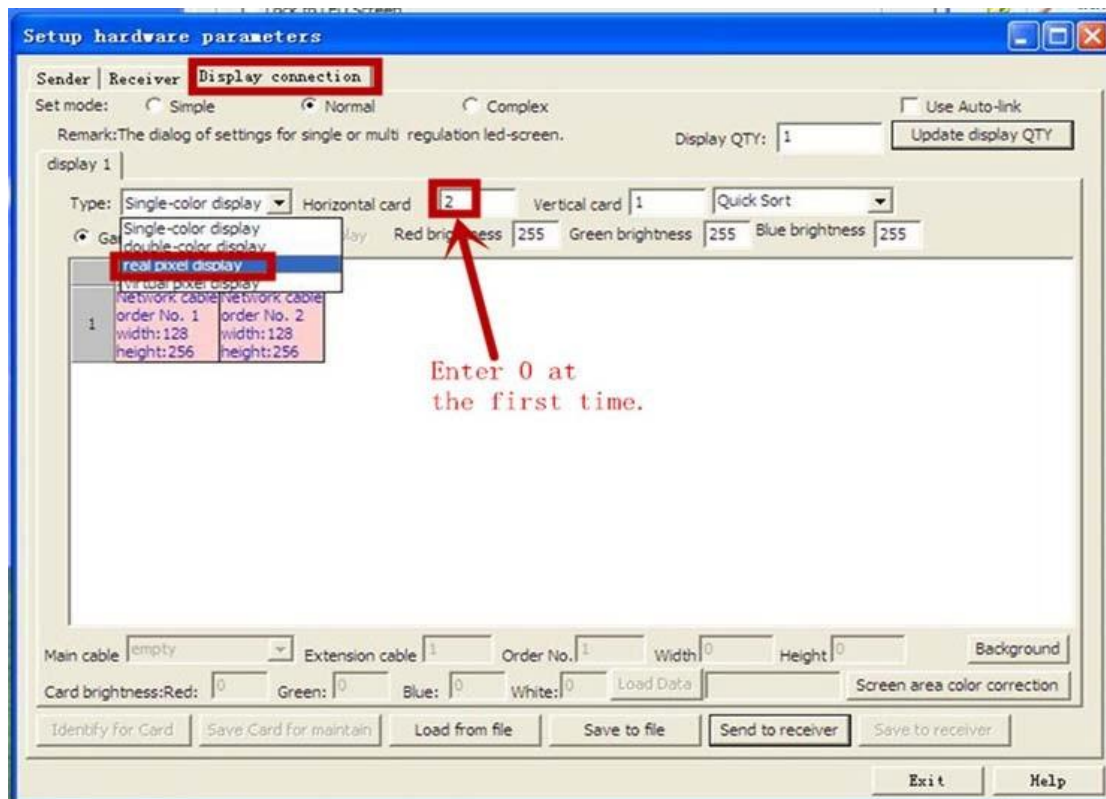


Step 7 Select Ok and Yes.

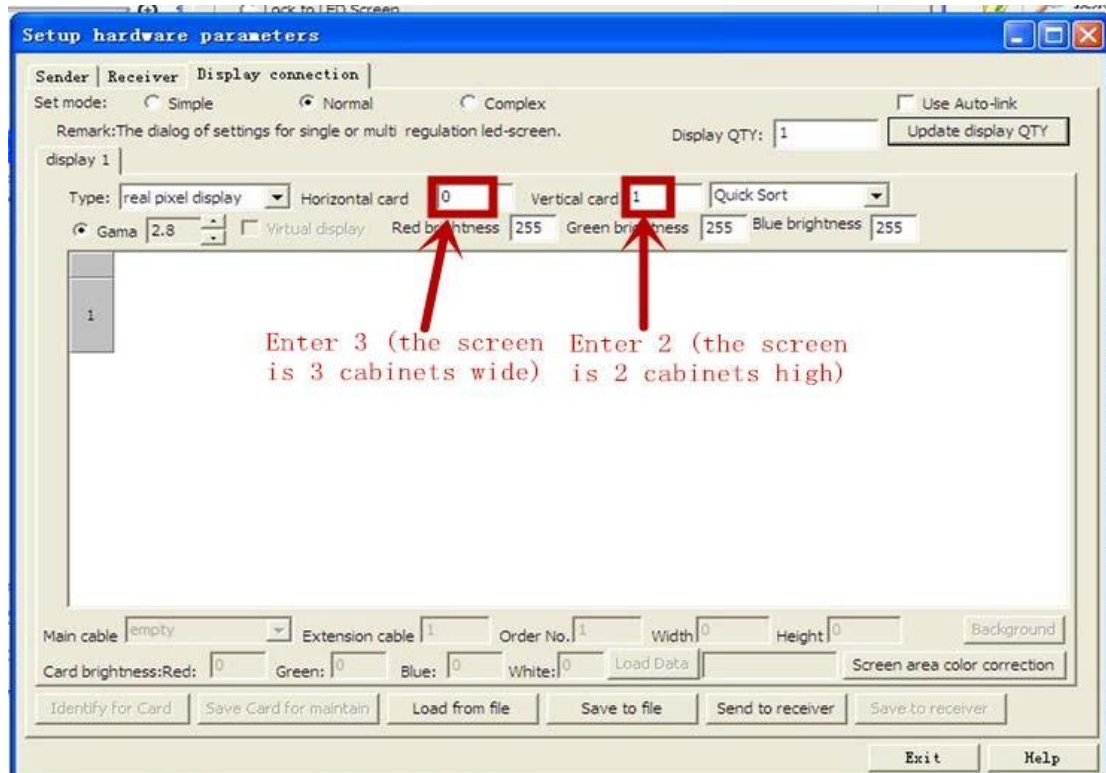


Step 8 Proceed to Display connection on the top. Make sure to select real pixel display for Type.

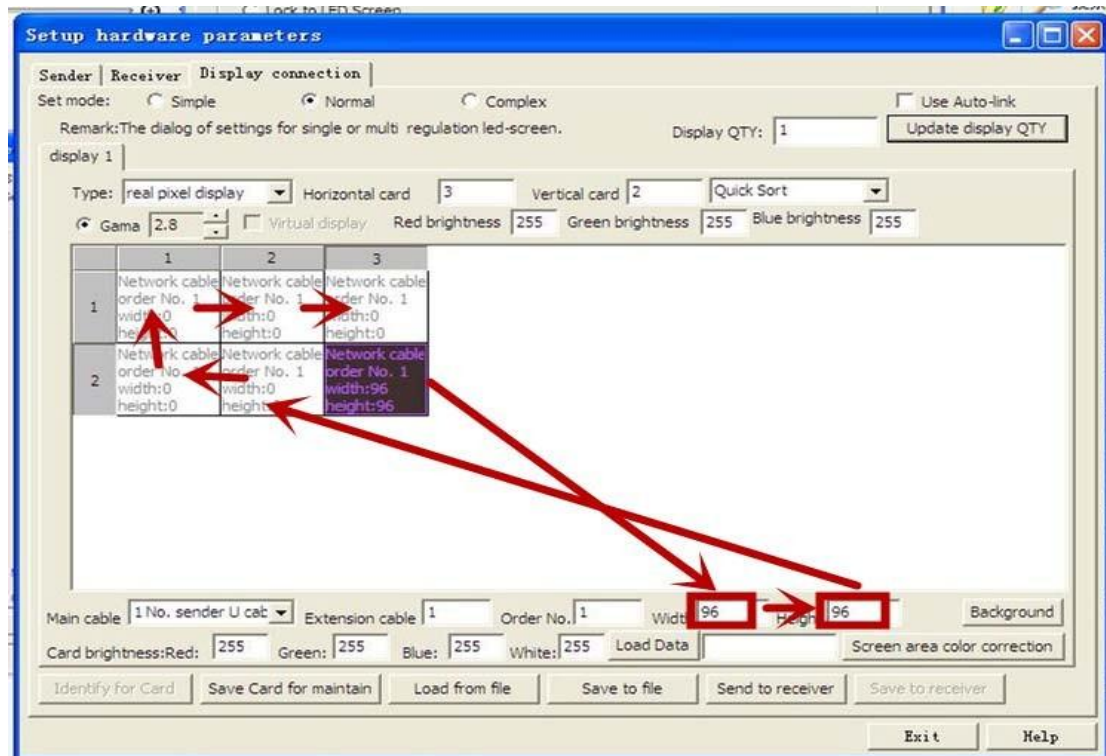
Remember to enter 0 at the first time in the blank of Horizontal card.



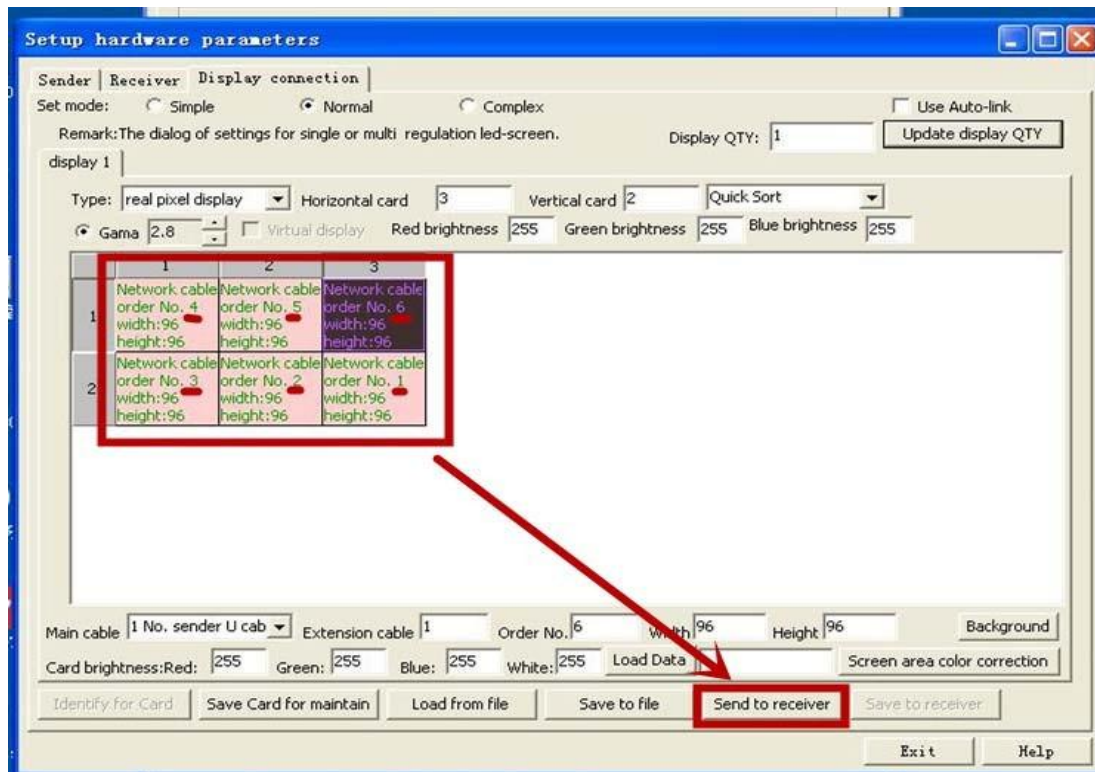
And then you will see the following window. Enter 3 in the blank for Horizontal card; enter 2 in the blank for Vertical card.



Step 9 After you enter card numbers, you will see the following window. First, click the box in the right bottom corner. Second, set both the width and height to 96 (the width and height of the cabinets is 96cm * 96cm). Third, click the other 5 boxes in the order shown below.

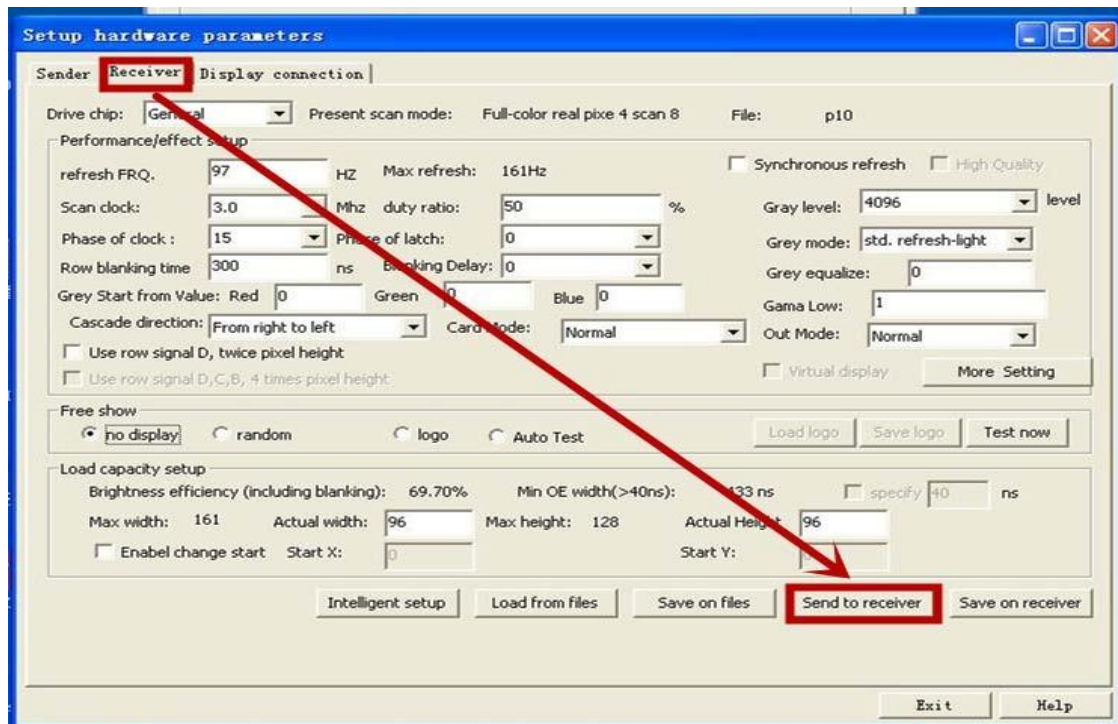


Step 10 After it's properly set, it should look like this. Note the order No. of the boxes. Then click Send to receiver.

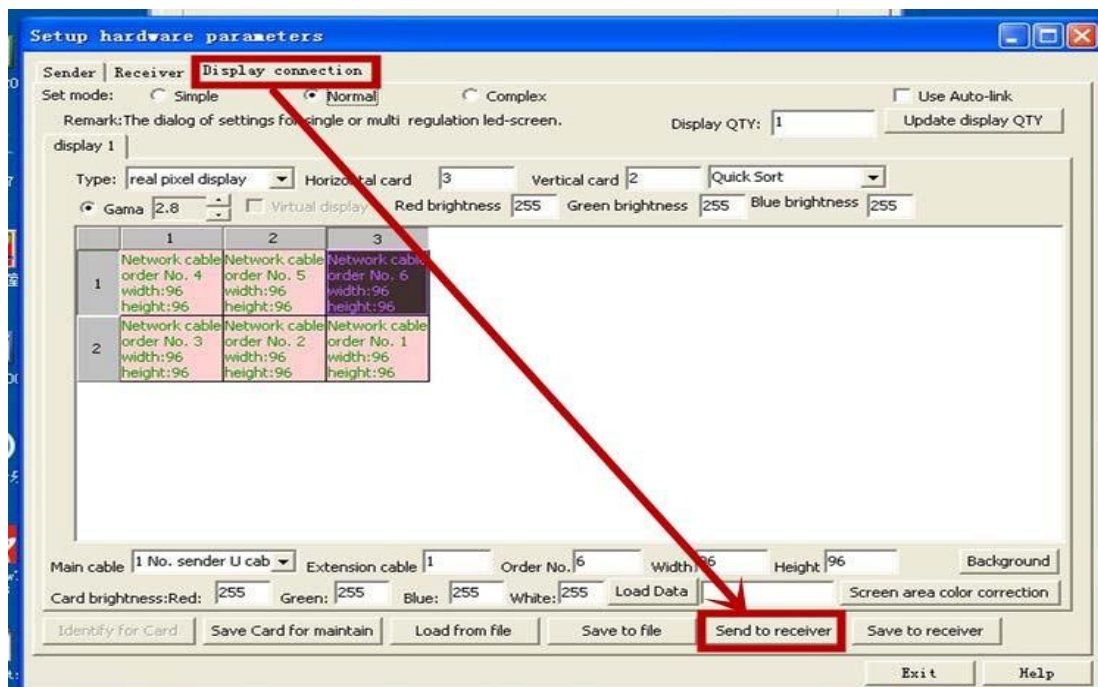




Step 11 Go back to Receiver on the top and then click Send to receiver again.

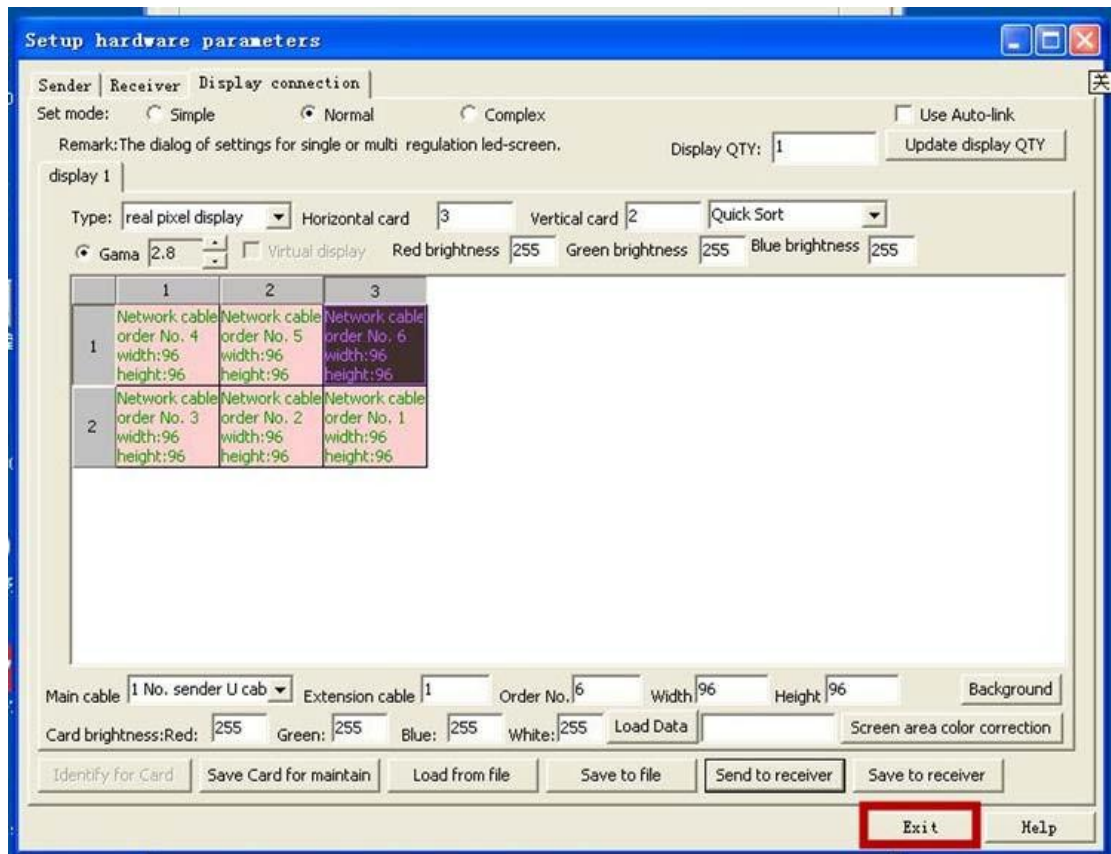


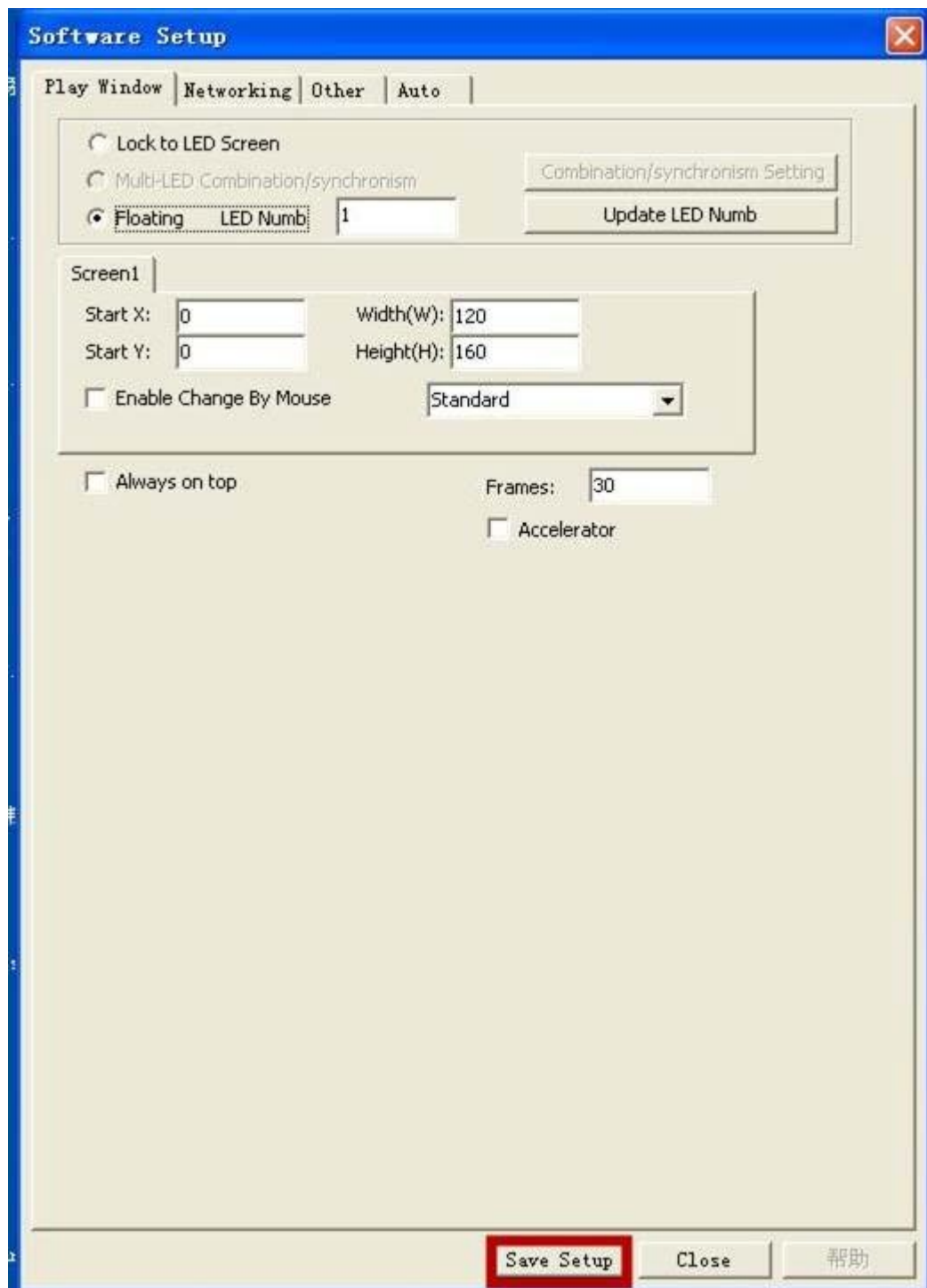
Step 12 Go back to the Display connection and click Send to receiver the third time.





Step 13 Exit and Save setup.

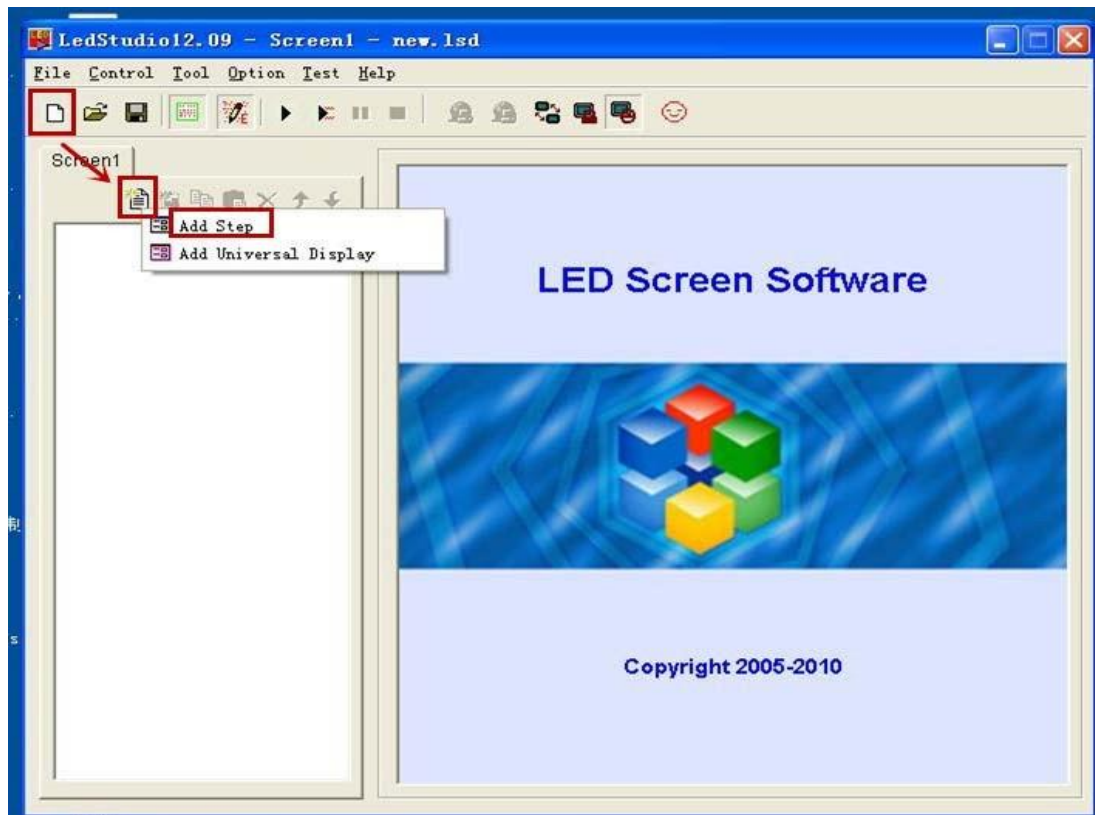




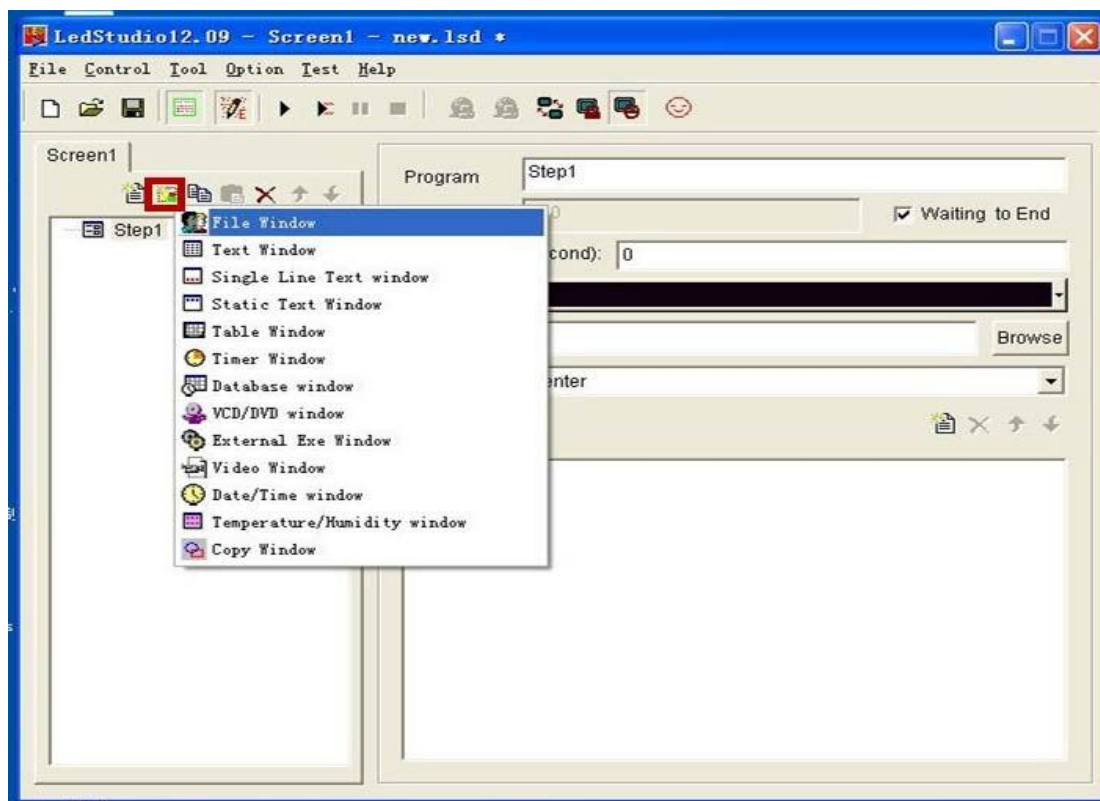
It's done for the software setup.

Then let's play a video with the display.

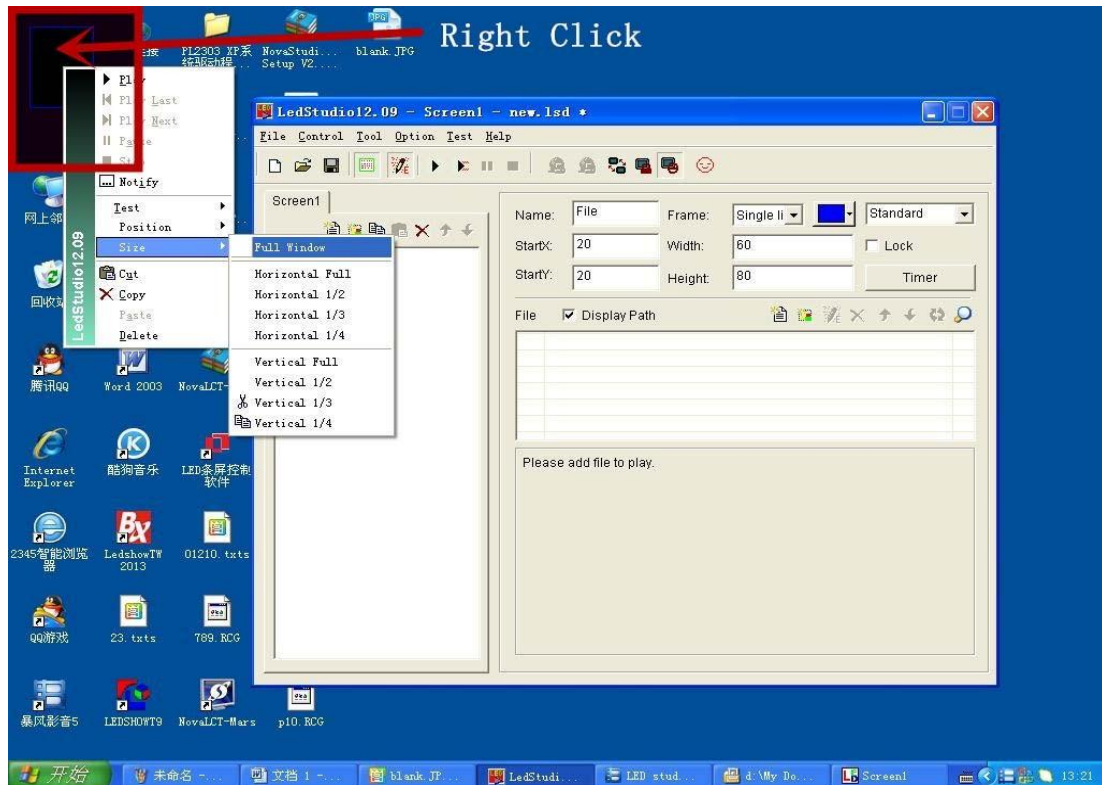
Step 1: New file→New page of program→Add Step



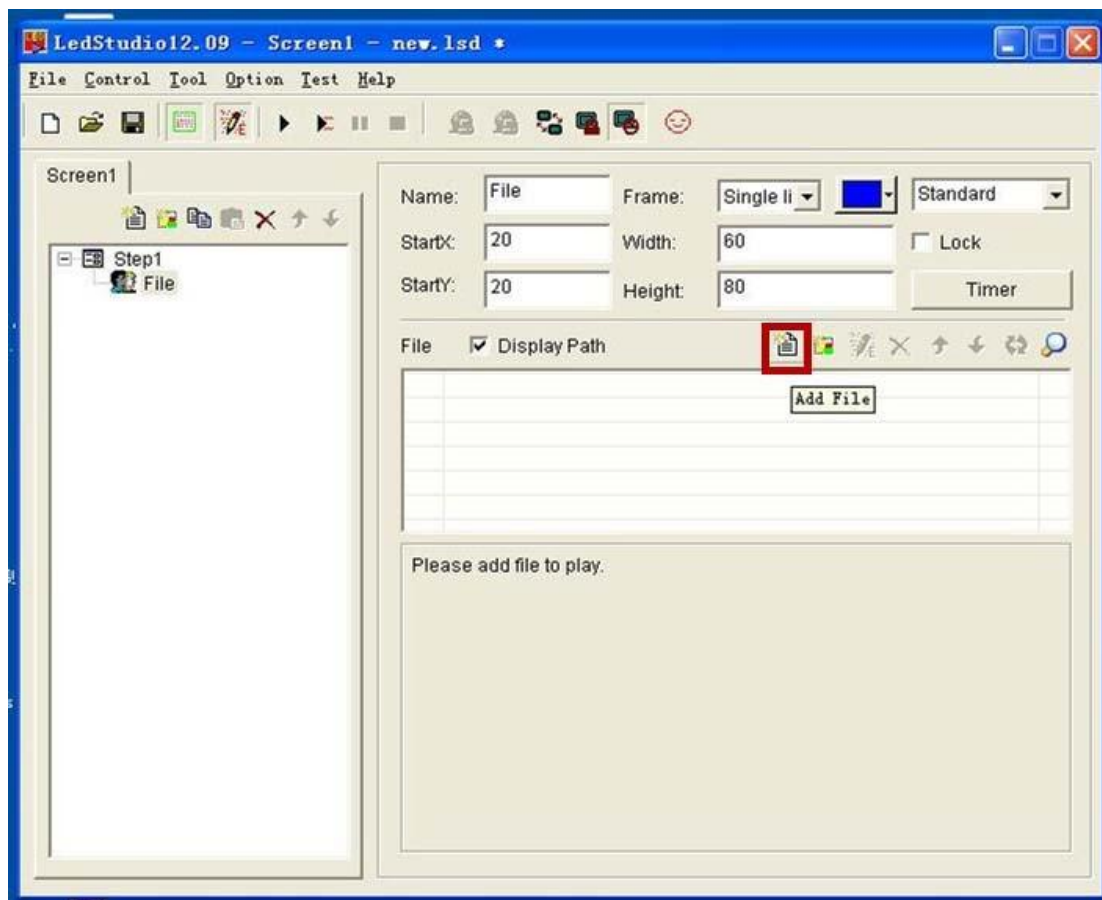
Step 2:→New window→File window



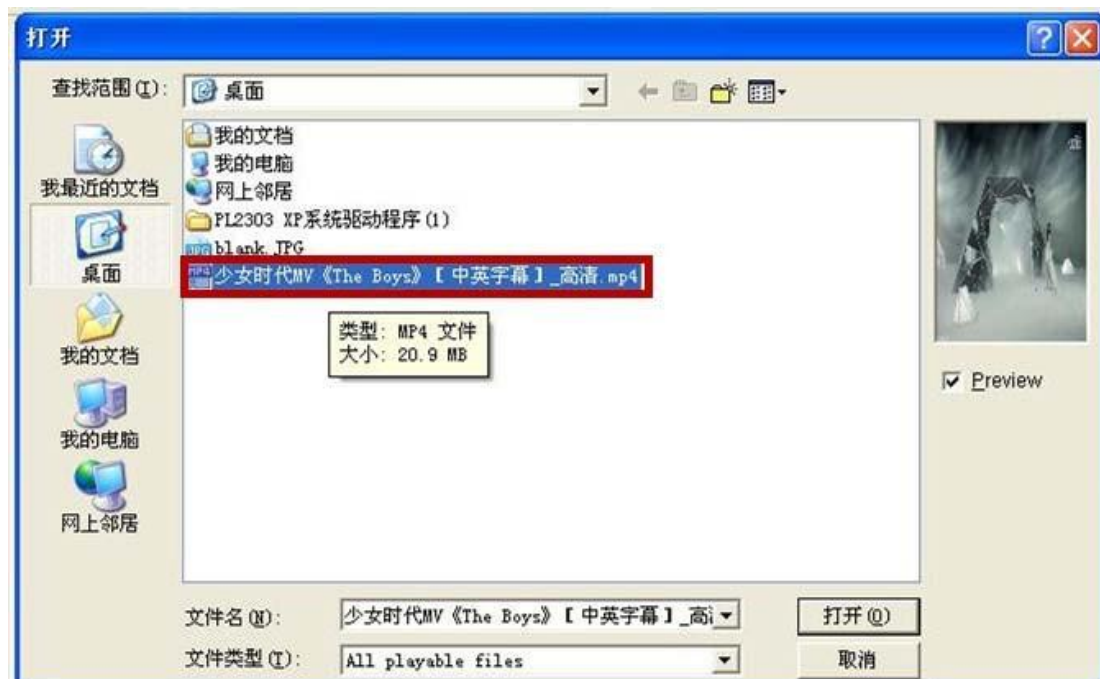
Step 3: Give the area floating on the left corner of the desktop a right click and select Size→Full window



Step 4: Click Add File.



Step 5: Select a file from the PC.



The video appears in the left corner of the PC will be displayed on the LED screen.

